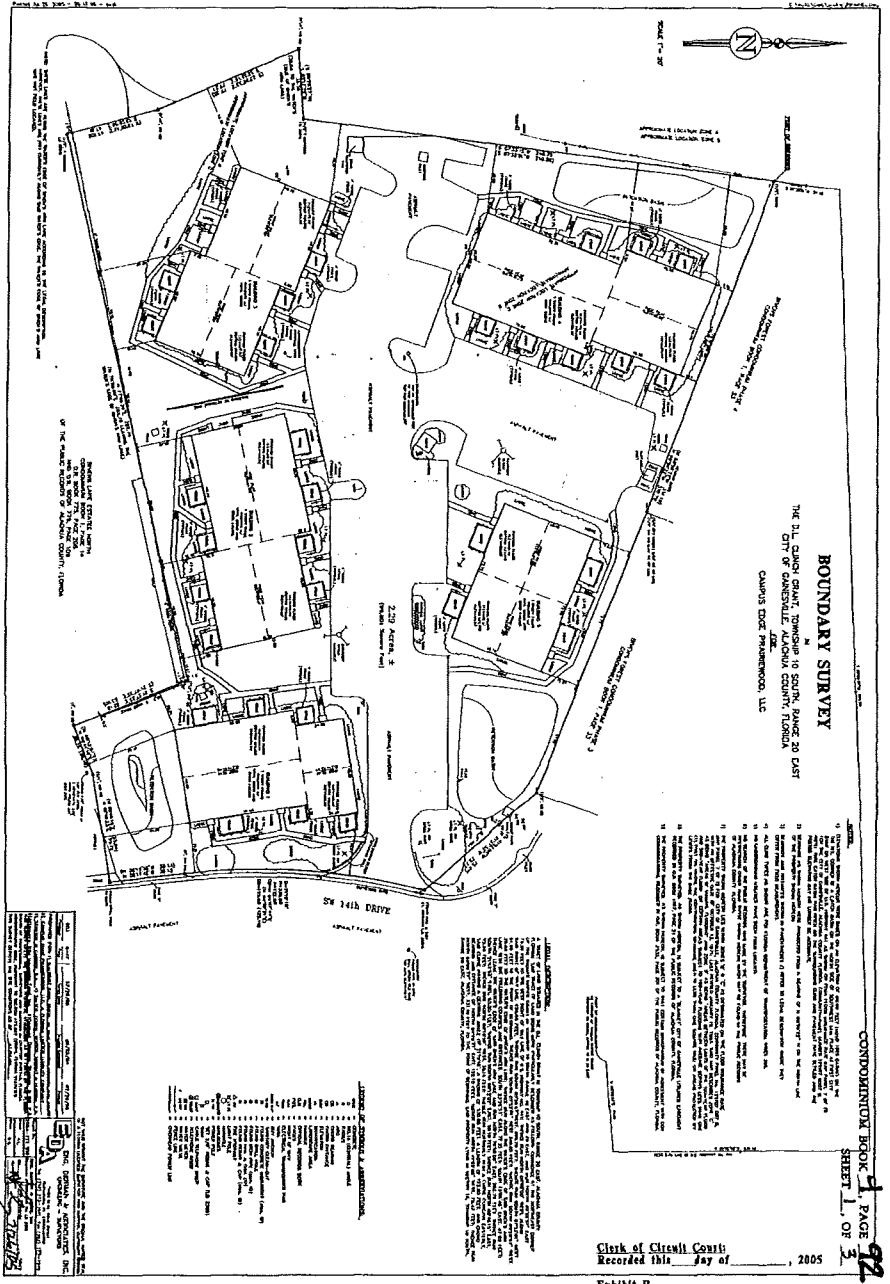


---

**EXHIBIT "B" TO DECLARATION**

**CONDOMINIUM PLOT PLAN,  
SURVEY, FLOOR PLANS**

INSTRUMENT # 2158480  
84 PGS



**BOUNDARY SURVEY**  
 THE BLUE CHAIRS CONDOMINIUM, PHASE 10 SOUTH, RANGE 20 EAST  
 CITY OF GAINESVILLE, ALACHUA COUNTY, FLORIDA  
 CAMBUS HOLDINGS, LLC

CONDOMINIUM BOOK 1, PAGE 472  
 SHEET 1, OF 3

1. The boundary survey was conducted on the 10th day of August, 2005, by the undersigned, a duly licensed and qualified surveyor in the State of Florida, and the results thereof are shown on this plan.

2. The boundary survey was conducted in accordance with the provisions of the Florida Statutes, Chapter 462, and the rules and regulations of the Board of Professional Regulation, Chapter 61B, Florida Administrative Code.

3. The boundary survey was conducted in accordance with the provisions of the Florida Statutes, Chapter 462, and the rules and regulations of the Board of Professional Regulation, Chapter 61B, Florida Administrative Code.

4. The boundary survey was conducted in accordance with the provisions of the Florida Statutes, Chapter 462, and the rules and regulations of the Board of Professional Regulation, Chapter 61B, Florida Administrative Code.

5. The boundary survey was conducted in accordance with the provisions of the Florida Statutes, Chapter 462, and the rules and regulations of the Board of Professional Regulation, Chapter 61B, Florida Administrative Code.

6. The boundary survey was conducted in accordance with the provisions of the Florida Statutes, Chapter 462, and the rules and regulations of the Board of Professional Regulation, Chapter 61B, Florida Administrative Code.

7. The boundary survey was conducted in accordance with the provisions of the Florida Statutes, Chapter 462, and the rules and regulations of the Board of Professional Regulation, Chapter 61B, Florida Administrative Code.

8. The boundary survey was conducted in accordance with the provisions of the Florida Statutes, Chapter 462, and the rules and regulations of the Board of Professional Regulation, Chapter 61B, Florida Administrative Code.

9. The boundary survey was conducted in accordance with the provisions of the Florida Statutes, Chapter 462, and the rules and regulations of the Board of Professional Regulation, Chapter 61B, Florida Administrative Code.

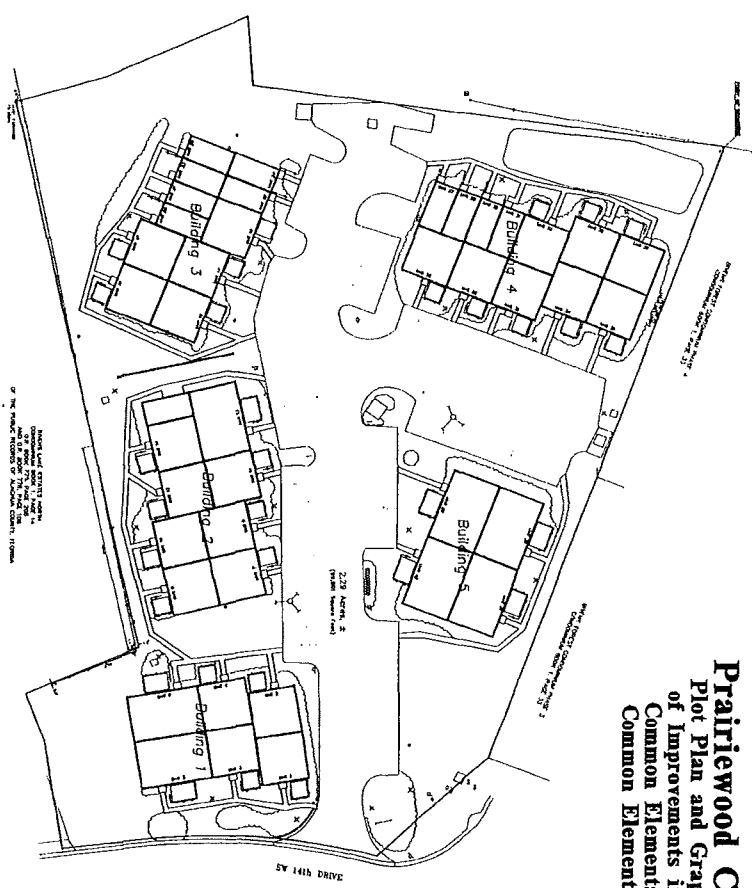
10. The boundary survey was conducted in accordance with the provisions of the Florida Statutes, Chapter 462, and the rules and regulations of the Board of Professional Regulation, Chapter 61B, Florida Administrative Code.

Clerk of Circuit Court  
 Recorded this \_\_\_\_\_ day of \_\_\_\_\_, 2005  
 Exhibit B

INSTRUMENT # 2158480  
 84 PGS

# Prairiewood Condominium

## Plot Plan and Graphic Description of Improvements in which Units, Common Elements and Limited Common Elements are located.



**CONDOMINIUM NOTES:**

- The boundaries of the units and common elements shown on this plot plan are based on the recorded subdivision map for this project.
- The boundaries of the units and common elements shown on this plot plan are based on the recorded subdivision map for this project.
- The boundaries of the units and common elements shown on this plot plan are based on the recorded subdivision map for this project.
- The boundaries of the units and common elements shown on this plot plan are based on the recorded subdivision map for this project.
- The boundaries of the units and common elements shown on this plot plan are based on the recorded subdivision map for this project.

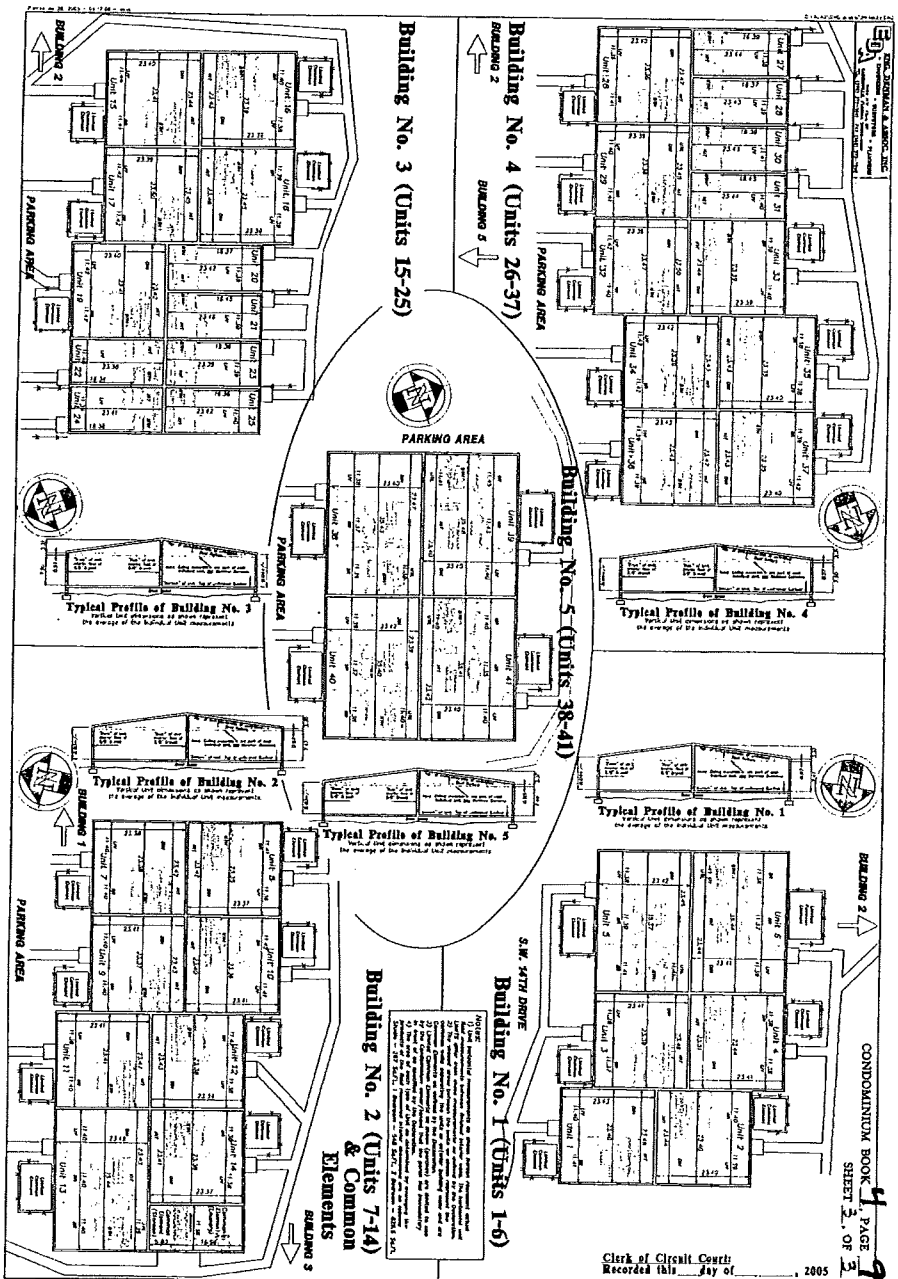
**CONDOMINIUM CERTIFICATION:**

I, the undersigned, being duly qualified, do hereby certify that the above is a true and correct copy of the recorded subdivision map for this project.

*[Signature]*  
 TIZALIBS

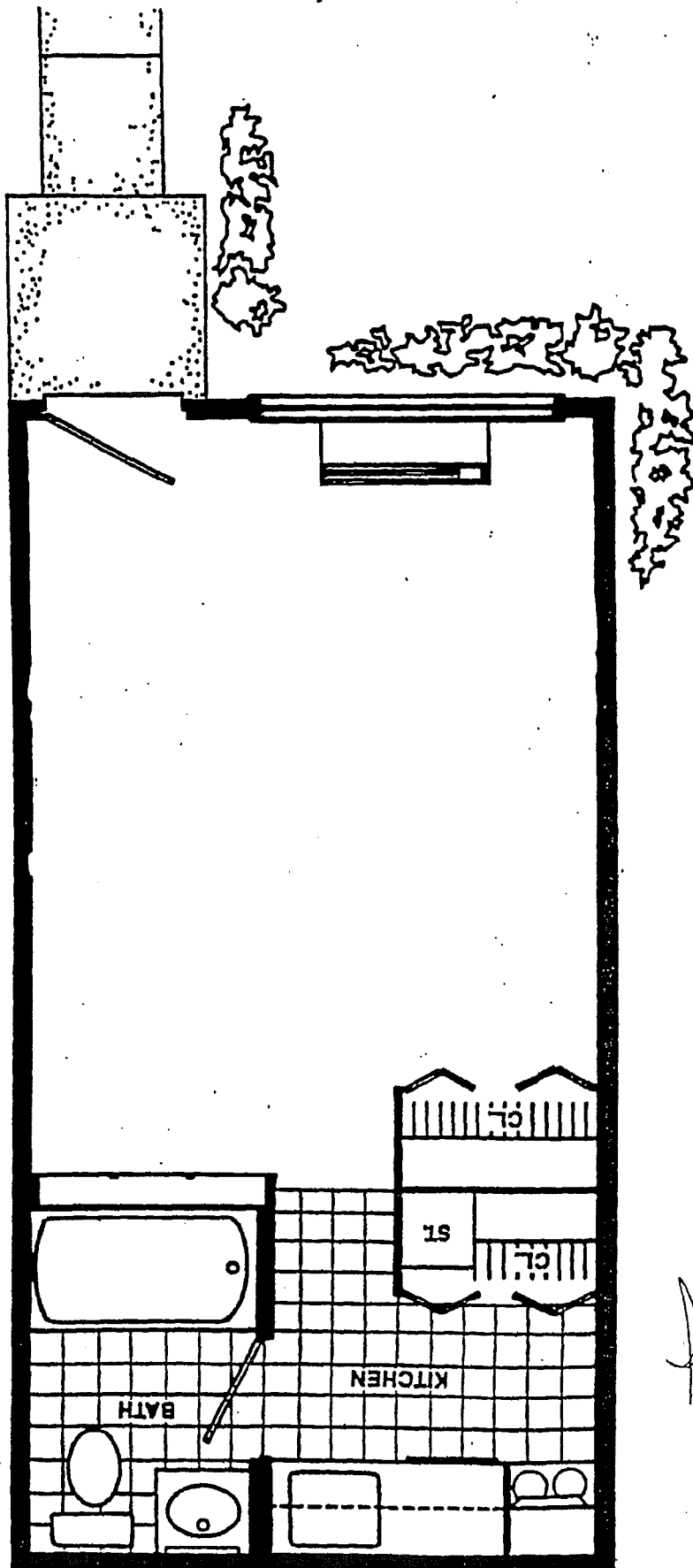
Clerk of Circuit Court  
 Recorded this \_\_\_\_\_ day of \_\_\_\_\_, 2005

Exhibit B



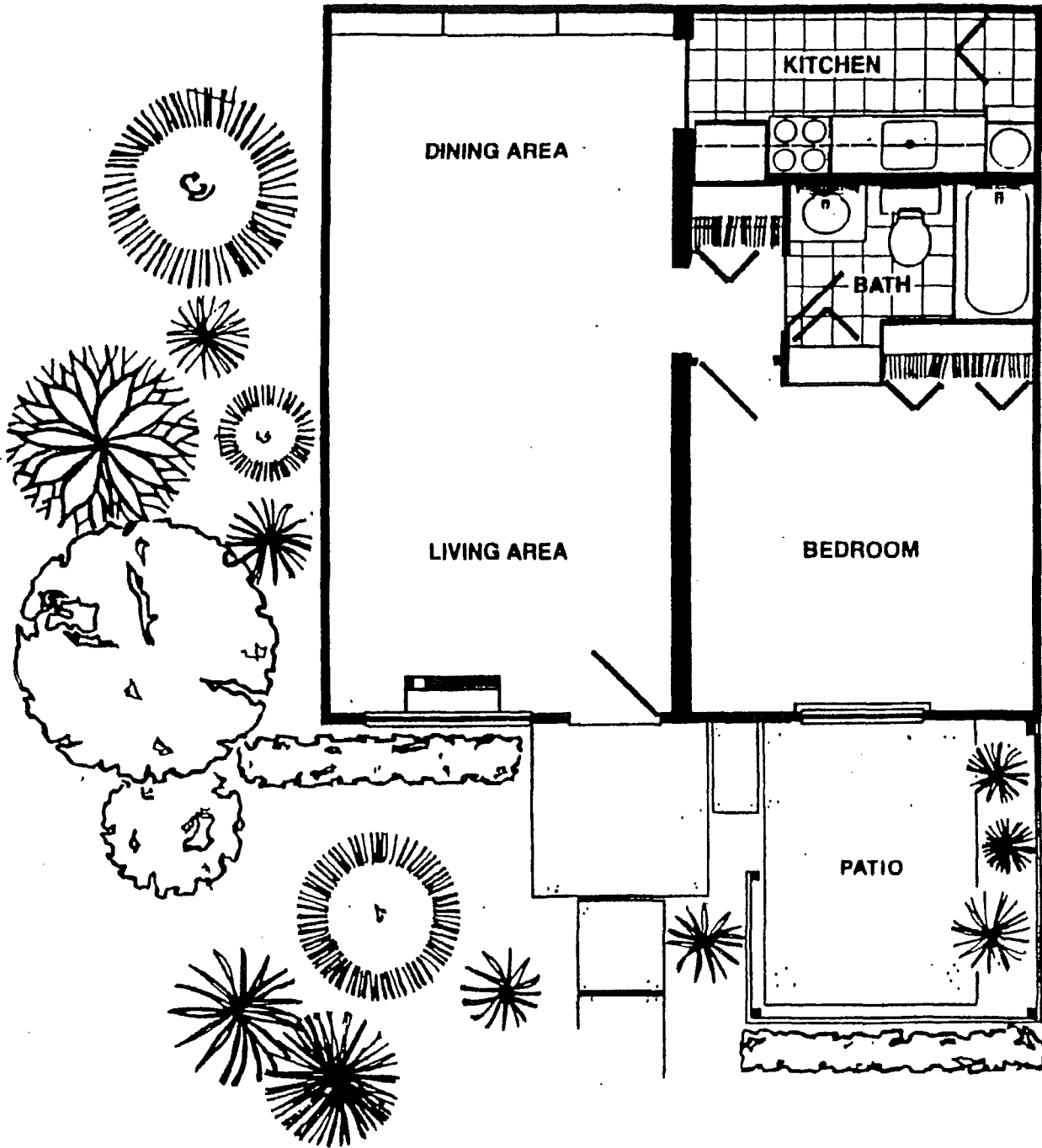
Clerk of Circuit Court  
 Recorded this \_\_\_\_\_ day of \_\_\_\_\_, 2005

INSTRUMENT # 2158480  
 84 PGS



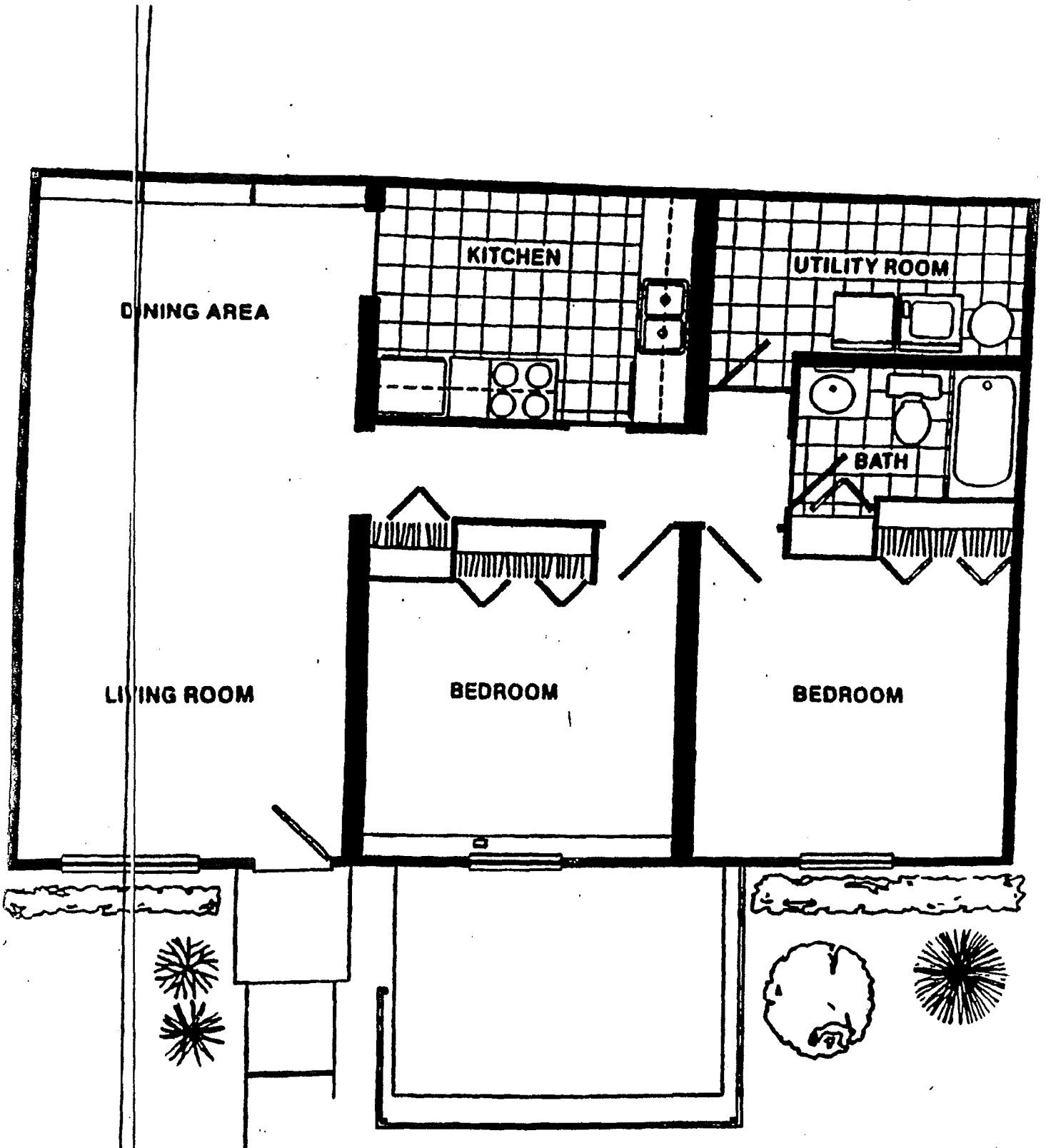
INSTRUMENT # 2158480  
84 PGS

*Studio*



**ONE BEDROOM FLOOR PLAN**

INSTRUMENT # 2158480  
84 PGS



INSTRUMENT # 2158480

84 PGS

## TWO BEDROOM FLOOR PLAN

**EXHIBIT "C" TO DECLARATION  
ASSOCIATION BYLAWS**

INSTRUMENT # 2158480  
84 PGS